



# ENVIRONMENTAL DISCLOSURE AND INFRASTRUCTURE REDUCTION IN THE SALE AND TRANSFER OF A FORMER MILITARY BARRACKS

## LESSONS LEARNED

*Department of National Defence*

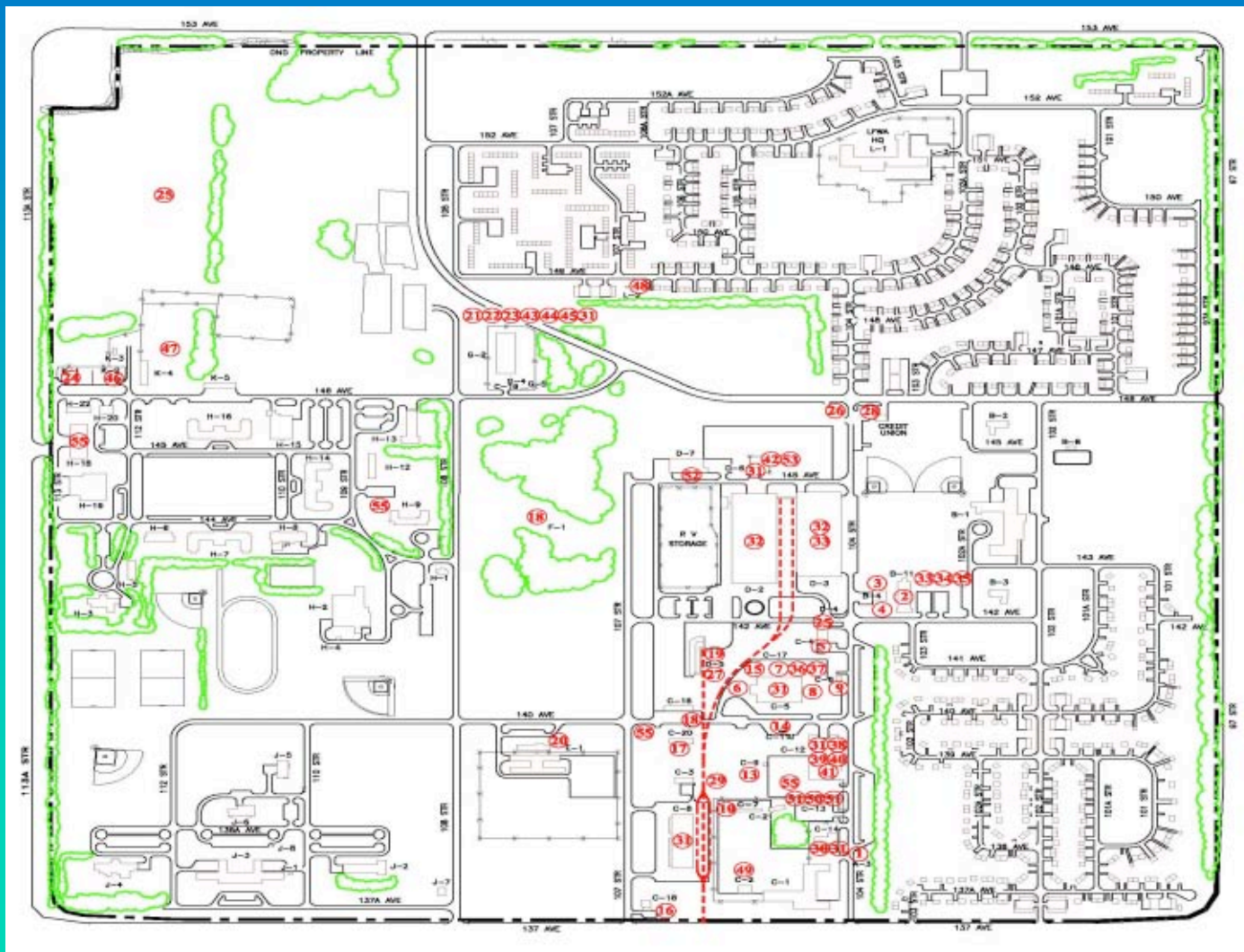
Rick Sherstabetoff, Roy Swyer and  
Joanne Sisetsky

*Canada Lands Company*

Tony Druett

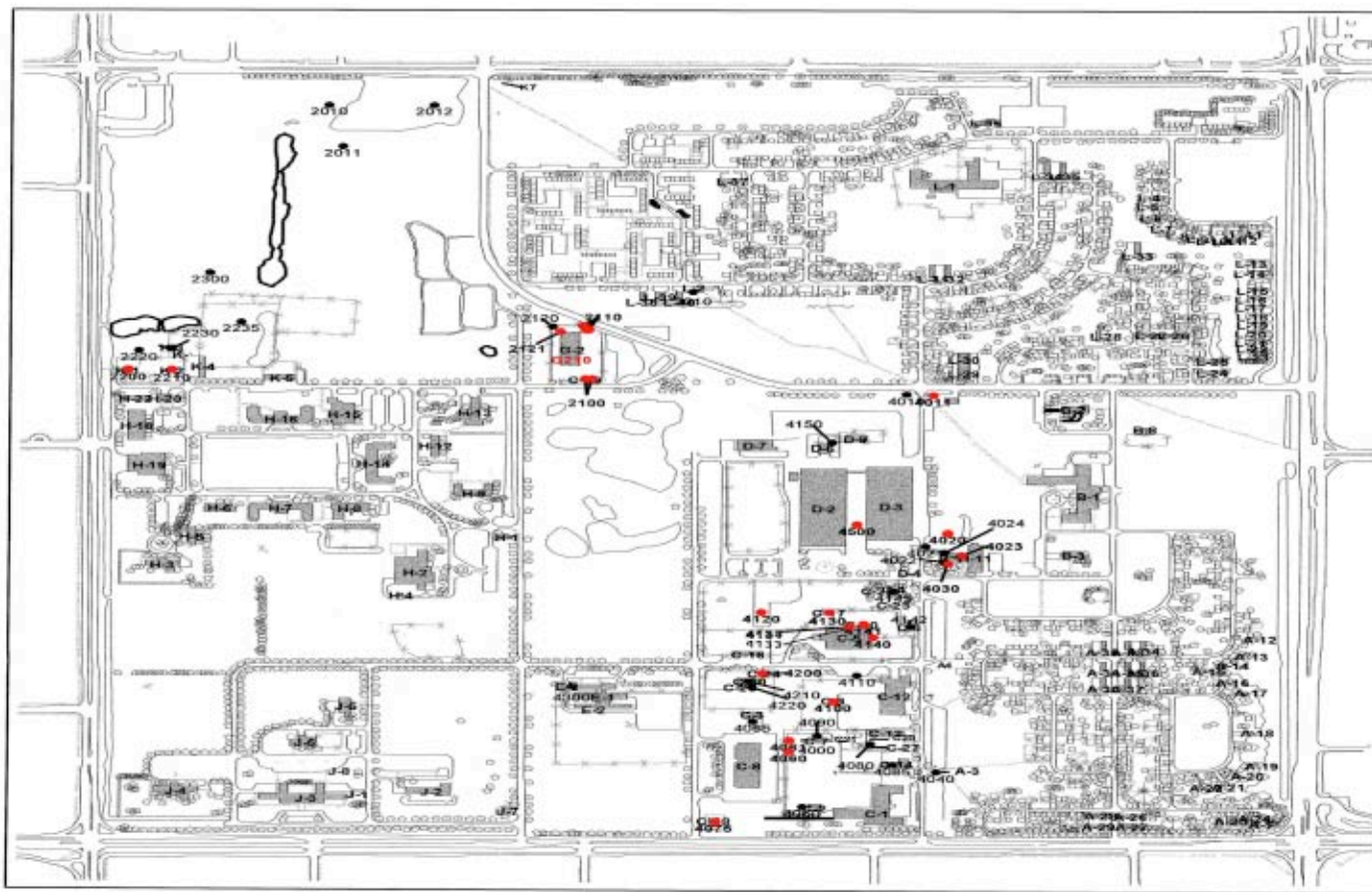


# Sixty Four (64) Potential Areas of Environmental Concern





# At Property Transfer, Twenty (20) Sites Remediated



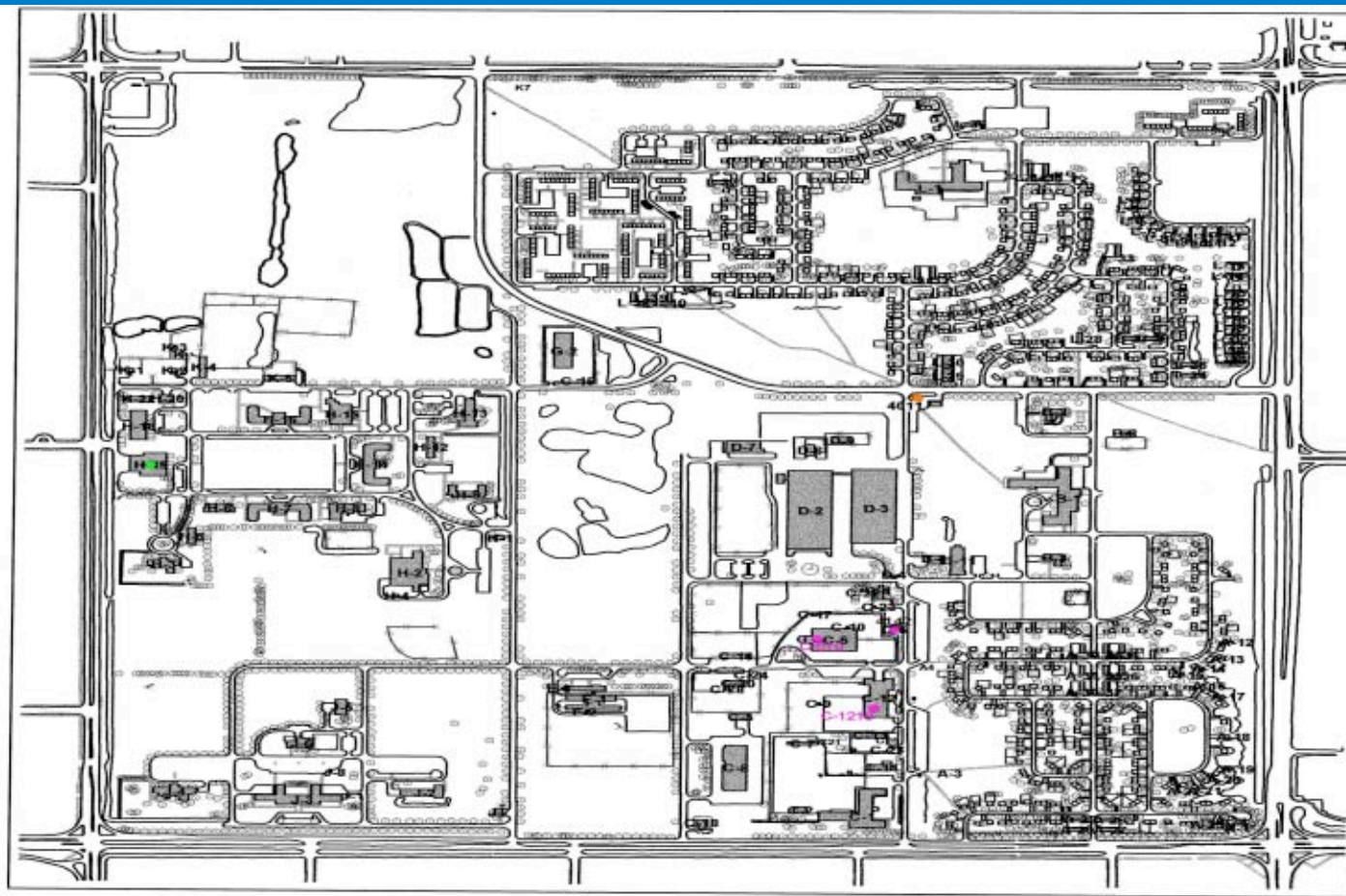
0.000 0.075 0.150 0.225 0.300 0.375 km

Scale 1 : 8000





# Post-Transfer Remediation (4 Sites)



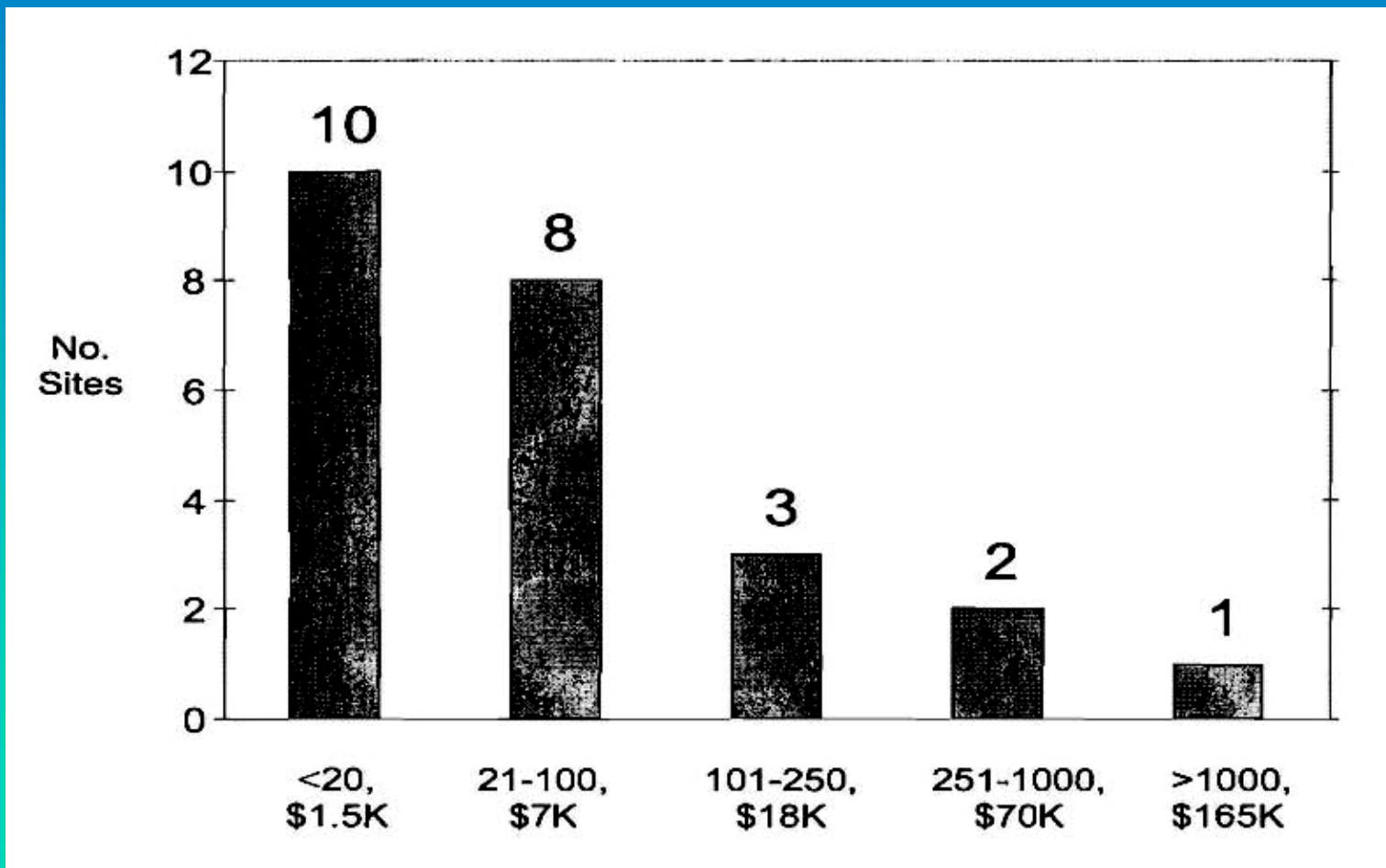
0.000 0.075 0.150 0.225 0.300 0.375 km

SCALE 1 : 8000





# Former Griesbach Barracks, Remediated Sites: Contaminated Soil Volumes and Maximum Remedial Cost Per Site<sup>1</sup>





# Lesson No. 1a: Early Stakeholder (CLC) Participation

Year	No. Suspect / Contaminated Sites - Action Agreed Upon: DND & CLC			No. Remaining
	NFW	Investigation	Remediation	
2000	18	46	0	<b>46</b>
2001	11	21	14	35
2002	31	0	7	4
2003	4	0	3	<b>1</b>

\* DND: Dept. National Defence; CLC: Canada Lands Company; NFW: No further work



# Some Examples of the Contaminated Sites ...



# Fire (Extinguisher) Training Area (4020)



**CWS F3 (2.25 m depth): 10,000 mg/kg (2300 m<sup>3</sup>)**

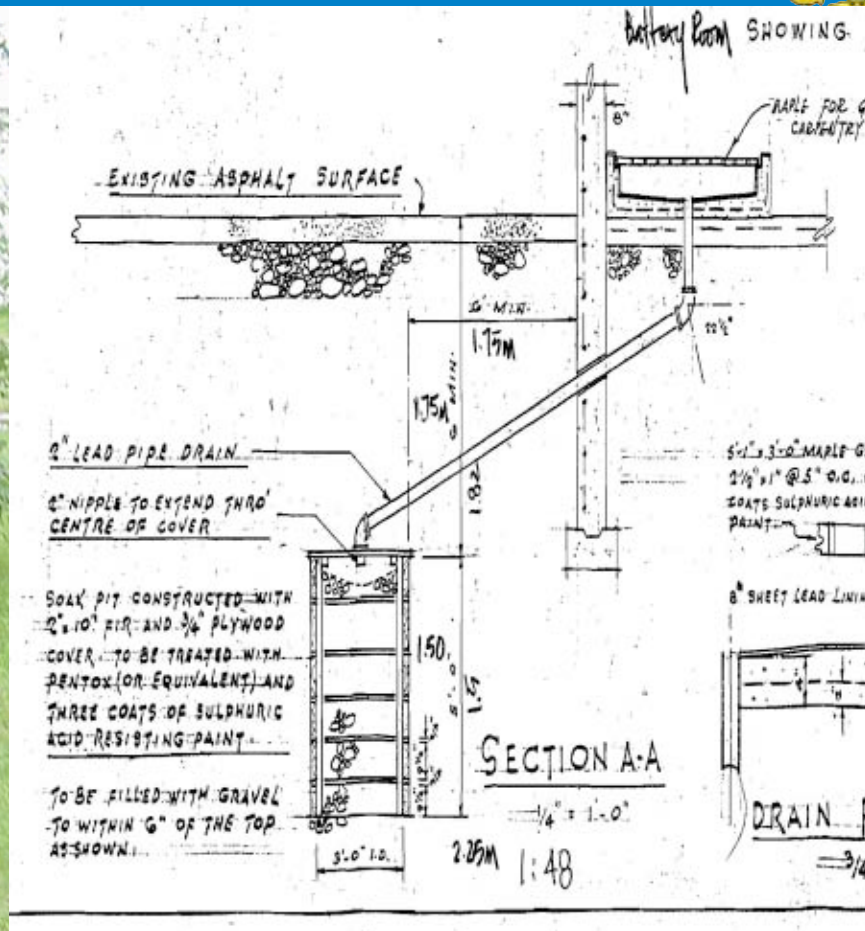
Directorate Environmental Engineering Management

Canada 





# Former Battery Acid Pit (4030)



**Total soil lead (3.0 m depth): 836 mg/kg (28 m<sup>3</sup>)**



# Bldg C6: Leaking Transformer (4142)



**CWS F3 (0-30 cm depth): 12,000 mg/kg (45 m<sup>3</sup>)**



# Bldg. C17, POL Storage (4130)



**CWS F3 (0-45 cm depth): 9,400 mg/kg (53 m<sup>3</sup>)**



# Lesson No. 1b: Harmonization with Military Ops



## *Operation Urban RAM*



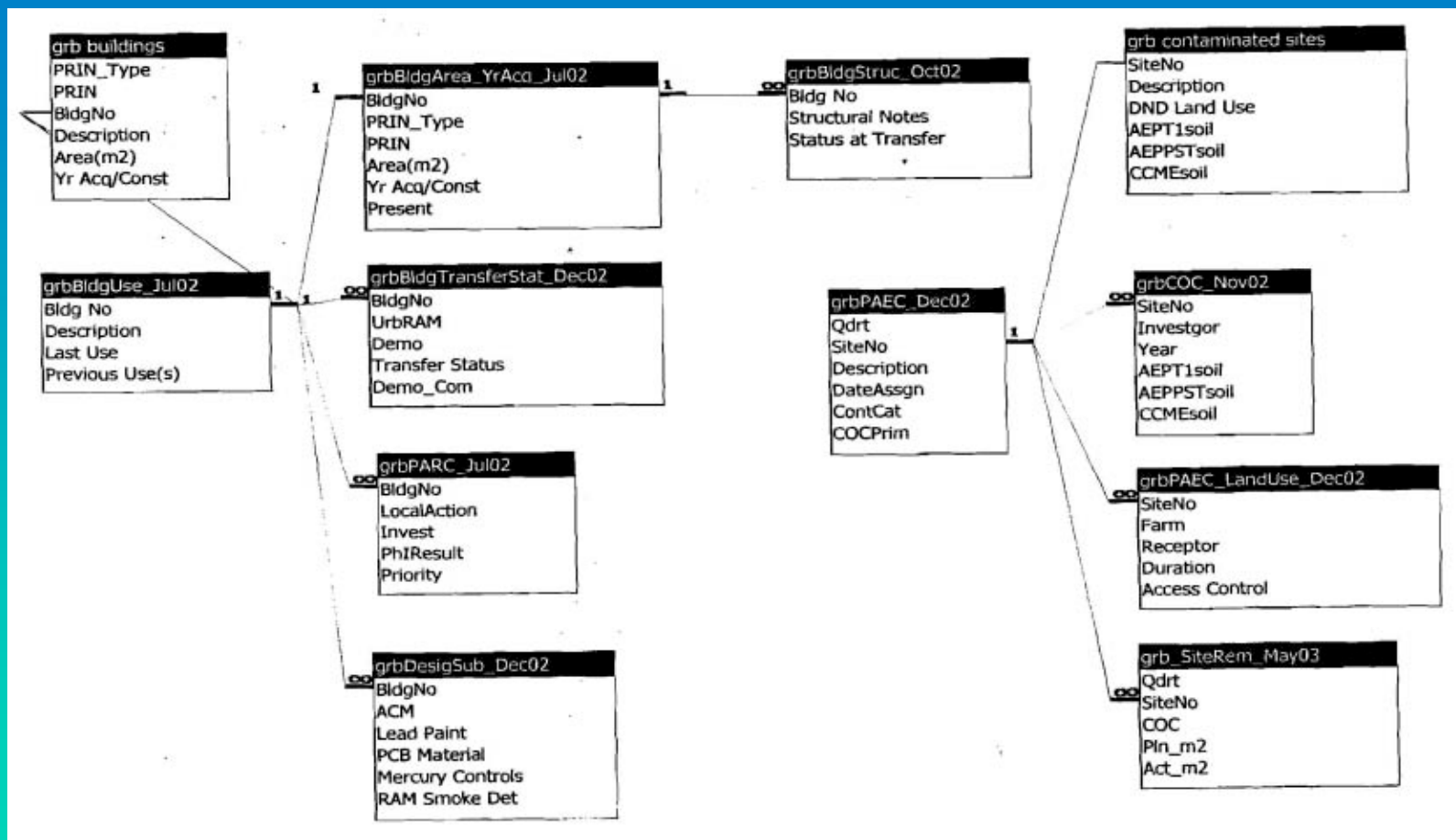


# Lesson No. 2: Standardized Disclosure Methods / Procedures

Environmental Disclosure Report Database  
*Buildings*  
*Contaminated Sites*



# Griesbach EDR Data Structure



Buildings

Contaminated Sites



# Canada Lands Company's *"Village at Griesbach"*

(A Glimpse of the Future)



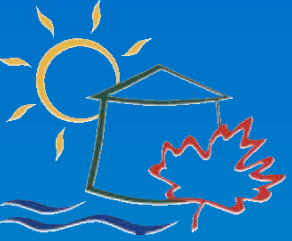
# Building Demolition





# PMQ Relocation and Renovation





# Single Family Residences





# Townhomes





# Village at Griesbach: Patricia Lake

